



# BRIDGE CLUB PACKAGES FOR 2012

WEEKEND NOV - APRIL  
2 NIGHTS B&B + 2 DINNERS

€ **139** pps

MIDWEEK APRIL - OCT  
2 NIGHTS B&B + 2 DINNERS

€ **129** pps

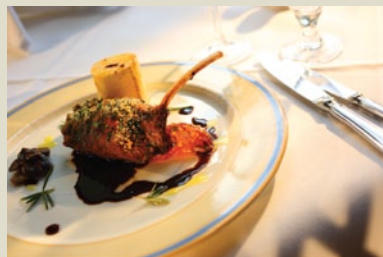
#### Package also includes:

- Complimentary Tea & Coffee & Biscuits on arrival
- Complimentary Tea & Coffee during playing hours
- Full use of The Estuary Club Health & Fitness centre
- Free on site parking

Faithlegg is situated 6 miles from Waterford city an ideal base from where you can access the vibrant shopping centre, take a tour of Waterford Crystal, enjoy a leisurely coastal drive to the nearby fishing village of Dunmore east or just relax and enjoy the luxurious surroundings and garden walks Faithlegg has on offer.

#### Terms & Conditions

Min 10 rooms - free place for every 20 paying guests - Deposit required to secure booking. Single supplement of €20 applies per room per night.



To Book or for enquiries contact 051-382000 email: [reservations@fhh.ie](mailto:reservations@fhh.ie)

[www.faithlegg.com](http://www.faithlegg.com)

An **F|B|D** Hotel